

ADJUSTABLE POWER SUPPLY

Kit has been designed around L317L 3 terminal adjustable positive voltage regulator IC capable of supplying over a 100mA 1.2V to 25V output range. both line and load regulation are better than standard fixed regulators, In addition to higher performance than fixed regulators, the LM317L offers full overload protection. Included on the chip are current limit, thermal overload protection and safe area protection. All overload protection circuitry remains fully functional even if the adjustment terminal is disconnected

Output 1.2V to 30V 100mA

Input 28V DC

Line regulation typically 0.01%V

Load regulation typically 0.1%

Current limit constant with temperature

LED for power indicator

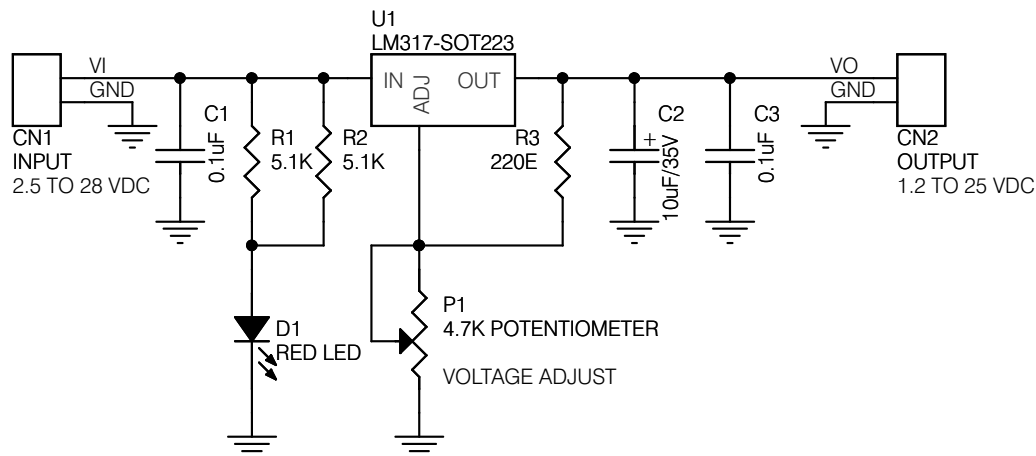
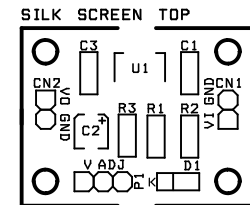
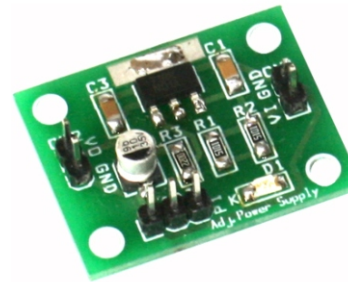
Voltage adjusts by Potentiometer

CN1:Supply input

CN2:Adjustable supply out put

P1:Voltage adjust

D1:Power indicator



SR	QTY	REFERENCE	DESCRIPTION
1	1	CN1	2 PIN BERG CONNECTOR
2	1	CN2	2 PIN BERG CONNECTOR
3	2	C1,C3	0.1uF
4	1	C2	10uF/35V
5	1	D1	RED LED
6	1	P1	3 PIN BERG CONNECTOR
7	2	R1,R2	5.1K
8	1	R3	220E
9	1	U1	LM317-SOT223
10	1	POT	4.7K POTENTIOMETER